



DUST VISUAL GUIDE

What is a Visual Guide?

A visual guide gives you lots of information about Z-arts and the show you are going to see, using pictures and accessible text.

They are suitable for anyone who would benefit from a clear and accessible introduction to Z-arts and the show you have booked to see.



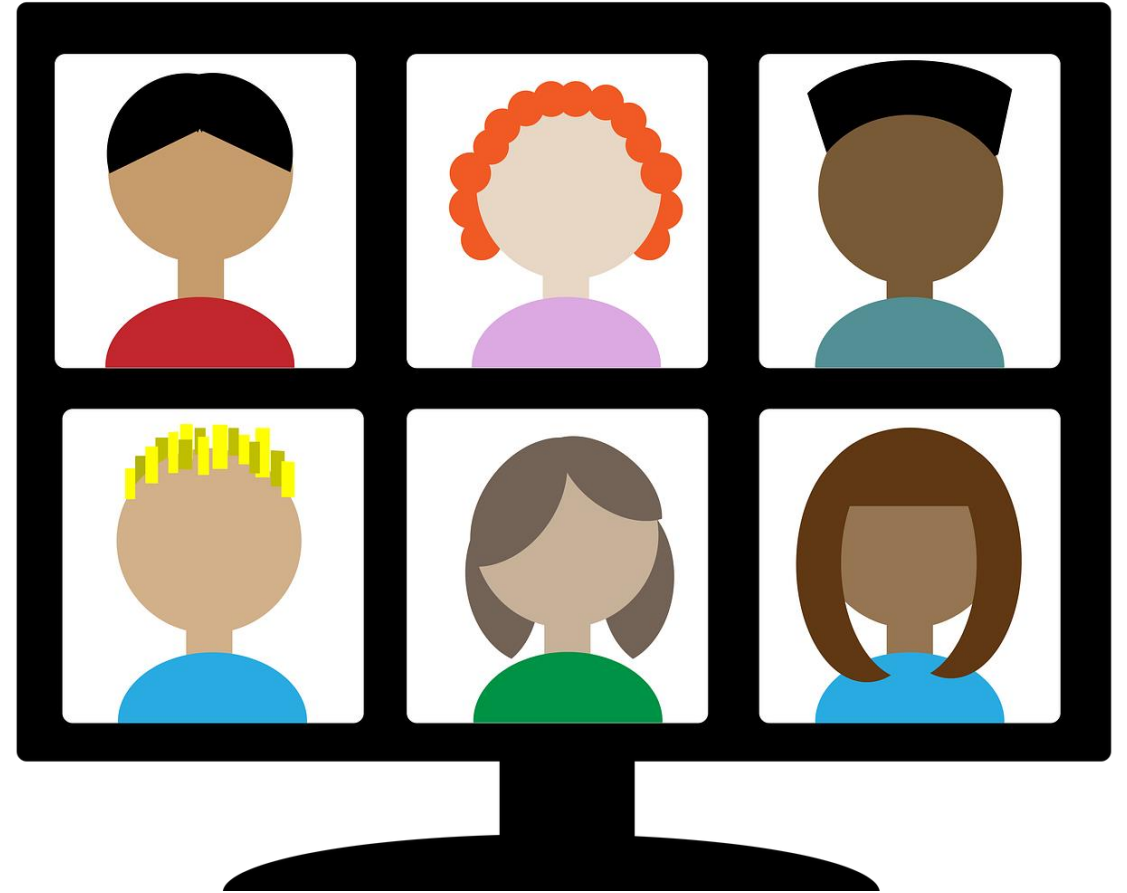
How Do I Watch The Show?

You will be sent a Zoom link.

When you click on the link, you will be taken to a waiting room.

You will enter the Zoom call when the show is about to begin.

New to Zoom? We have a Zoom guide on our website: [How to join us for Zoom sessions - Z-arts \(z-arts.org\)](https://z-arts.org)



Who will be in the show?



This is Katherine Vernez-Gray.

She is a performer.

Katherine plays the character of Nelly in the show.

At times, Katherine also puppeteers the Titch puppet.

Who will be in the show?



This is Faye Weerasinghe

She is also a performer.

Faye plays the character of Titch in the show.

At times, Faye also puppeteers the Titch puppet.

What to expect in the show



During the show you hear and see the Dust Monster. You first see the Dust Monster at the start of the show with Nelly.



At first Titch is scared of the Dust Monster, but by the end of the show they become friends.



Titch is taken on a tour of the house. During the tour of the house she will hear her strange noises and might scream.

What to expect in the show



At one point, the screen gets very dark and the characters use a torch to guide themselves around.



You will see: two performers acting and singing on the screen. They will tell everyone a story and take everyone on a journey around the old house. There is also a puppet of one of the performers and a small model of the house.



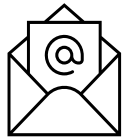
There is an old gramophone played on the stage and you will hear a male voice singing a song.

Do you have any other questions about the show?

Please get in touch!



@Z_arts_mcr #BIDigiFest



tiffany@z-arts.org

We hope you enjoy the show!